



SAHCO

Collection 2021 'Beau'

Index

Introduction to the Beau Collection

Mood images

Range images

Product pages

Sample packages

Collection booklet

Beau

An evocation of inherent beauty and character, *Beau* reflects the desire to imbue our homes with meaning and personality. It is luxury at its essence, life affirming and emotionally engaging. Textiles to feel and to see. Intuitive and expressive with dissolved forms and soft tactility. Rich in cultural references and refinement but relaxed in attitude and atmosphere.

Taking cues from cinematic vignettes, French haute couture and slow escapes or adventures, the collection of 8 textiles plays with contrast and colour, gathering and realigning to create a fresh mode of expression. Sophisticated and subtly subversive, finding harmony within creative dissonance: delicate and strong, clear and nuanced, fluid and sculptural.





Beau Collection

“Beau means beautiful in French and has a weight to it that refers to longevity and attachment, which is really important to how we feel at home. At home you want to surround yourself with beautiful things to cherish and keep for a long time, so I focussed on softness and tactility and taking the seriousness out of luxury. It does not have to be overly composed, rather I took a more intuitive approach with dissolved patterns and unexpected combinations or juxtapositions that surprise a little. By mixing different times and stories you set a new narrative that creates a dialogue between the contrasting elements,” says Design Director Anna Vilhelmine Ebbesen.

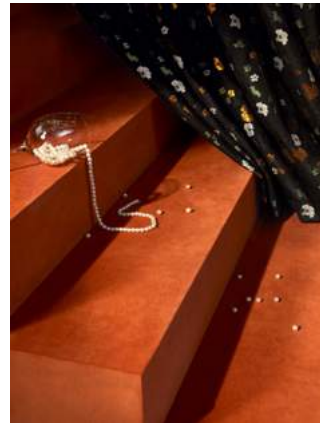
Building on the two previous collections, *Beau* re-interprets classic fabrics in inventive hues and finishes, and pushes the boundaries of weaving techniques to produce intricate crafted textiles.

Beau Collection

Saros is a light pure new wool sheer in deep tones and faded neutrals while *Oaxaca*, a tough almost sculptural canvas, is inspired by the bold naturally pigmented facades of the ancient Mexican city it is named after. *Monroe*, a delicate floral sheer evoking haute couture uses the fil coupe shearing technique to create a transparent base in an intricate jacquard weave, and *Tropic*, a rich jacquard weave, has an exotic leafy pattern that feels almost embroidered. Casual natural linen and cotton sheers in dusty chalky tones are inspired by Bedouin desert culture and well-worn clothes.

Taking cues from fashion, *Baru* a bouclé weave upholstery fabric in deep earthy hues and elegant neutrals. The mostly wool upholstery is ultra-soft like shorn fleece but durable because of the finishing processes.





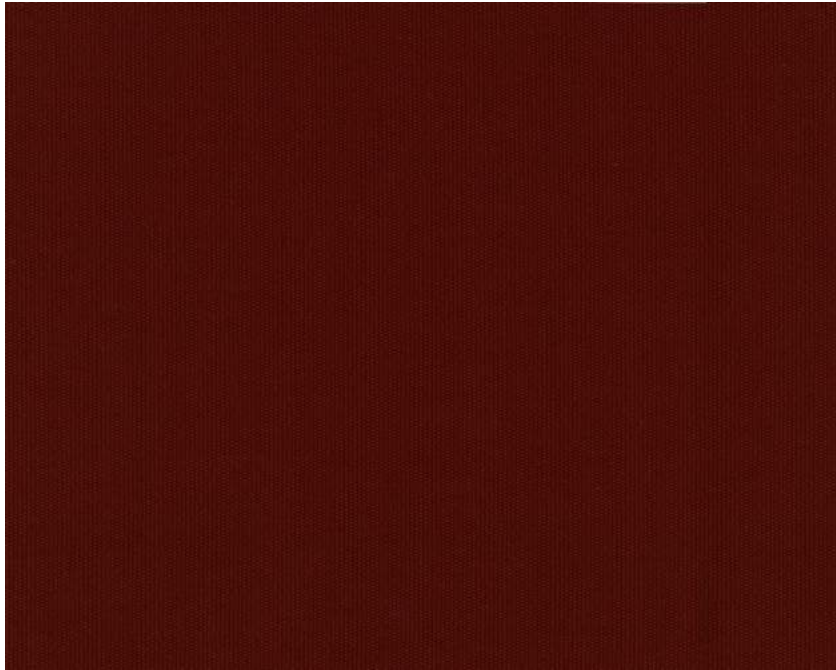
Mood images



Range images



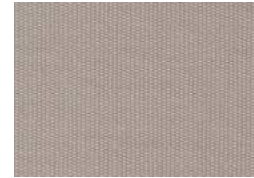
Inspiration - Oaxaca



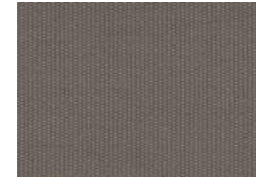
Oaxaca

Upholstery
Colours 15
Width 146cm
Material 100% cotton

A thick unicoloured canvas referencing durable workers' wear, *Oaxaca* is a plain weave, piece dyed cotton with an inventive colour range inspired by the bold, naturally pigmented facades of Oaxaca in Mexico. With a rigour that evokes the structured canvas formations of the German conceptual artist Franz Erhard Walther, the heavy canvas suits simple tailored detailing. It takes on a distinctive refined character when combined with other materials such as a soft leather. The colour palette ranges from Mexican influenced brick red, rusty orange, cerulean blue, deep curry, golden olive and midnight blue to classic neutrals like chalk white, off white, steel grey, warm grey, camel, sand and faded brown.



110



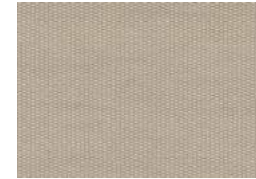
130



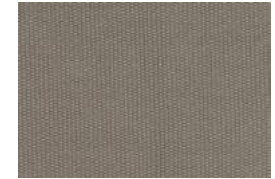
160



190



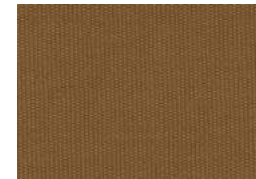
210



230



330



340



380



460



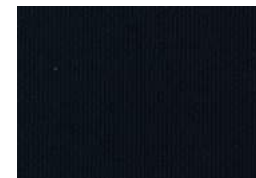
560



570



750



790



950



Inspiration - Baru



Baru

Upholstery

Colours 12

Width 140cm

Material 87% wool, 10% polyester, 3% polyamide

An ultra-soft woven woollen bouclé, *Baru* feels like shorn fleece and has a comforting volume created by the elasticity of the wool fibre and the finishing processes. Yarn dyed with one colour in warp and another in weft, it has the benefits of a woollen textile but a softer feel. The texture of the bouclé coupled with a slight shine from the acrylic blend creates a playful effect as the colour catches the light. Minimal contrasts in the yarns produce strong hues such as midnight, forest green, maroon and dark chocolate, while a darker base adds depth. Softer shades of snow, light grey, ash, camel, vanilla and moss green have a mélange effect from the contrasting base.



120



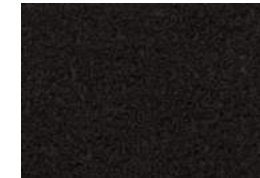
150



200



330



390



410



450



570



740



780



950



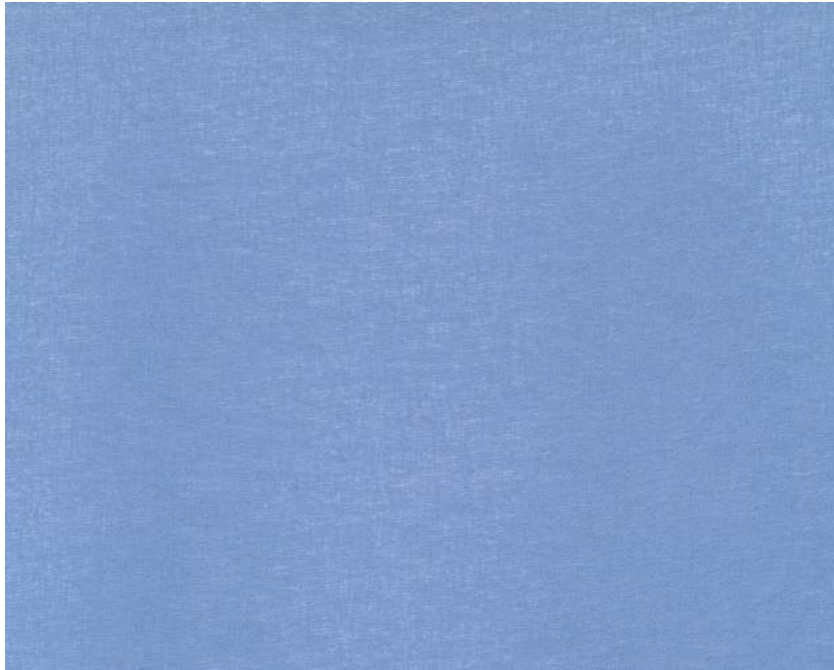
980



Inspiration - Ash



Ash



Ash

Drapery
Colours 10
Width 306cm
Material 100% polyester FR

A light modern sheer with a matt dusty appearance inspired by powdery clay and chalk, *Ash* has the tactility of natural fibres with fire-resistant properties. The uneven dry texture of the piece dyed textile is the result of highly twisted yarns and the finishing phase of the jacquard weave. The palette reflects its powdery inspiration with chalk, ecru, sandy beige, light peach and light canary yellow contrasted by sky blue, raven blue, ox blood, slate grey and titanium white.



100



130



160



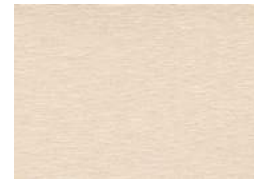
180



200



260



500



680



720



910



Inspiration – Pippa



Pippa



Pippa

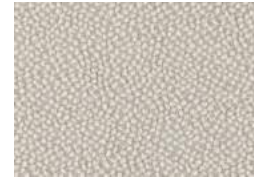
Drapery

Colours 10

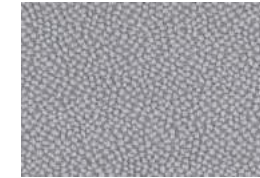
Width 300cm

Material 75% cotton, 25% polyamide

Inspired by rhythmic patterns of Japanese Shibori fabrics, *Pippa* is a handmade artisan textile with an exceptional crepe-like surface and delicate transparency. The shiny polyamide warp adds a hint of shine to the natural dry cotton weft, while shrinkage from the finishing technique creates a three-dimensional surface. Double dying creates a two-toned colour effect. Light hues of pearl white, silver grey, pale yellow and powder pink are complemented by earthy tones of agave, amber and raw sienna while dark indigo, Maya blue and lipstick red add a bold contrast.



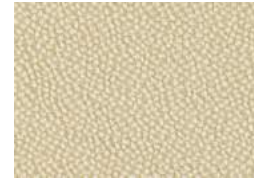
110



140



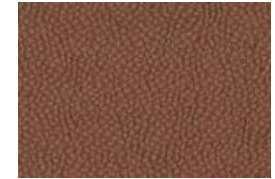
190



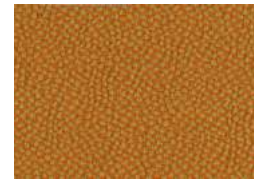
210



250



380



470



500



550



750



Heron



Heron

Drapery
Colours 12
Width 295cm
Material 100% linen

A casual semi sheer 100% linen that is soft to touch, *Heron* has a natural, artisan feel from small irregularities in the linen fibres. Like a symbolic heron, the textile suggests stillness and tranquillity as it hangs in casual folds. Its bleached-out palette, inspired by Bedouin desert culture, is created by yarn dyes and two subtly different tones in warp and weft that read almost as one colour. In a range of soft neutrals from rice white, optic white, sand and beige to faded pink, misty light purple, mud brown, autumn green, warm curry, nutmeg, steel grey and midnight.



100



180



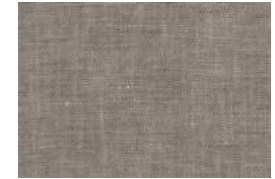
200



220



240



310



380



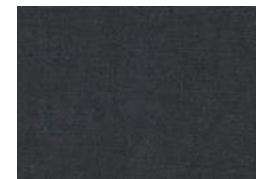
460



610



700



790



980



Inspiration - Saros



Saros



Saros

Drapery

Colours 9

Width 325cm

Material 100% pure new wool

A fresh interpretation of a timeless woollen sheer, *Saros* uses inventive hues to create a new expression while fine woollen yarn and Airo finishes enhance lightness and transparency. The double-width sheer is soft and drapes elegantly like well-worn tailored clothing, an inspiration also reflected in the colour palette of the yarn dyed fabric created by mixing yarns that are either fibre dyed mélange or solid dyed. Deep tones ranging from black burgundy, dark ivy and dark Maya blue are desaturated by warps in off white or black. Mélange red and sepia orange complement the faded neutrals, rice white, light grey, warm beige and ash.



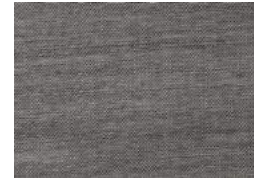
140



200



240



290



330



650



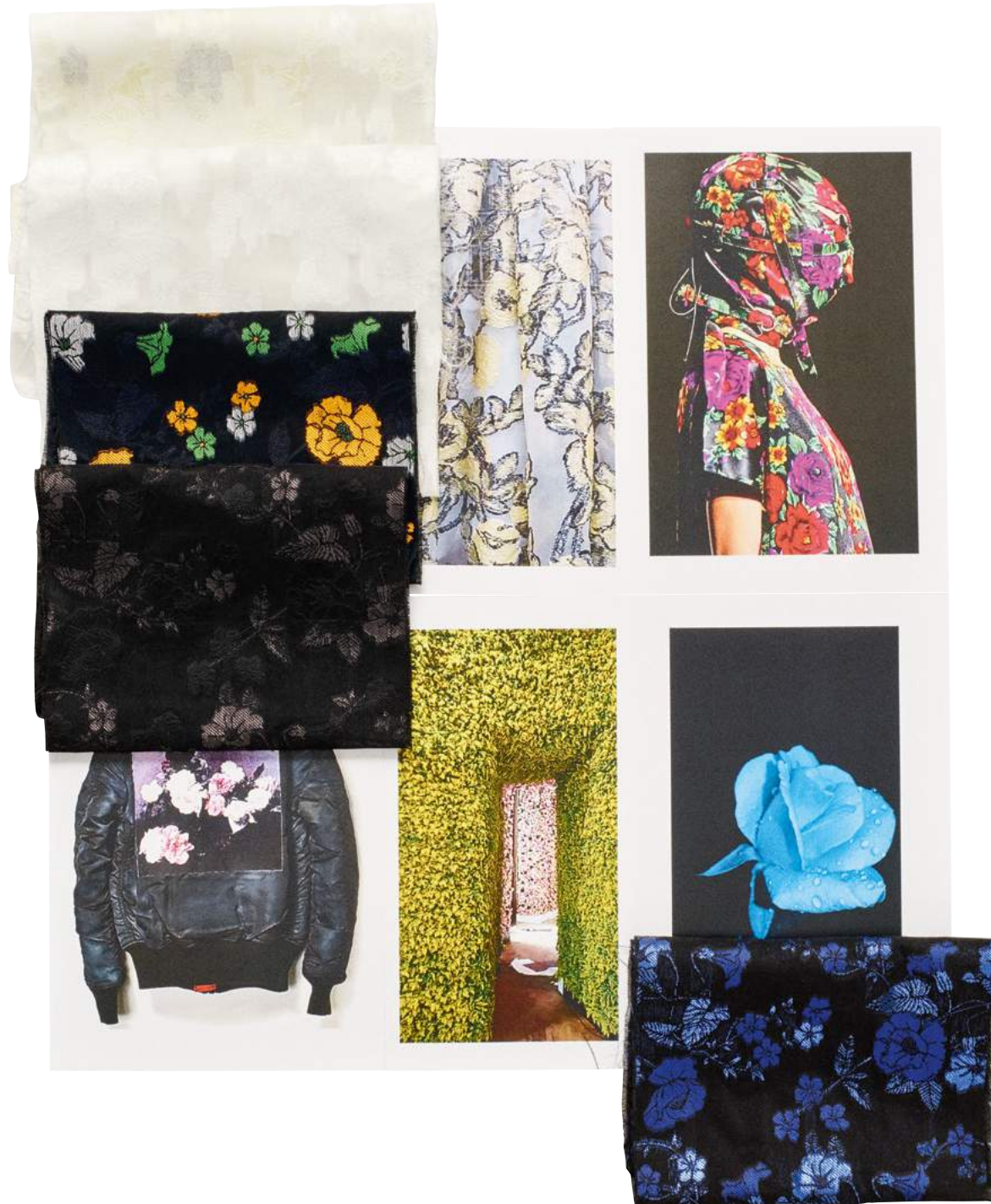
690



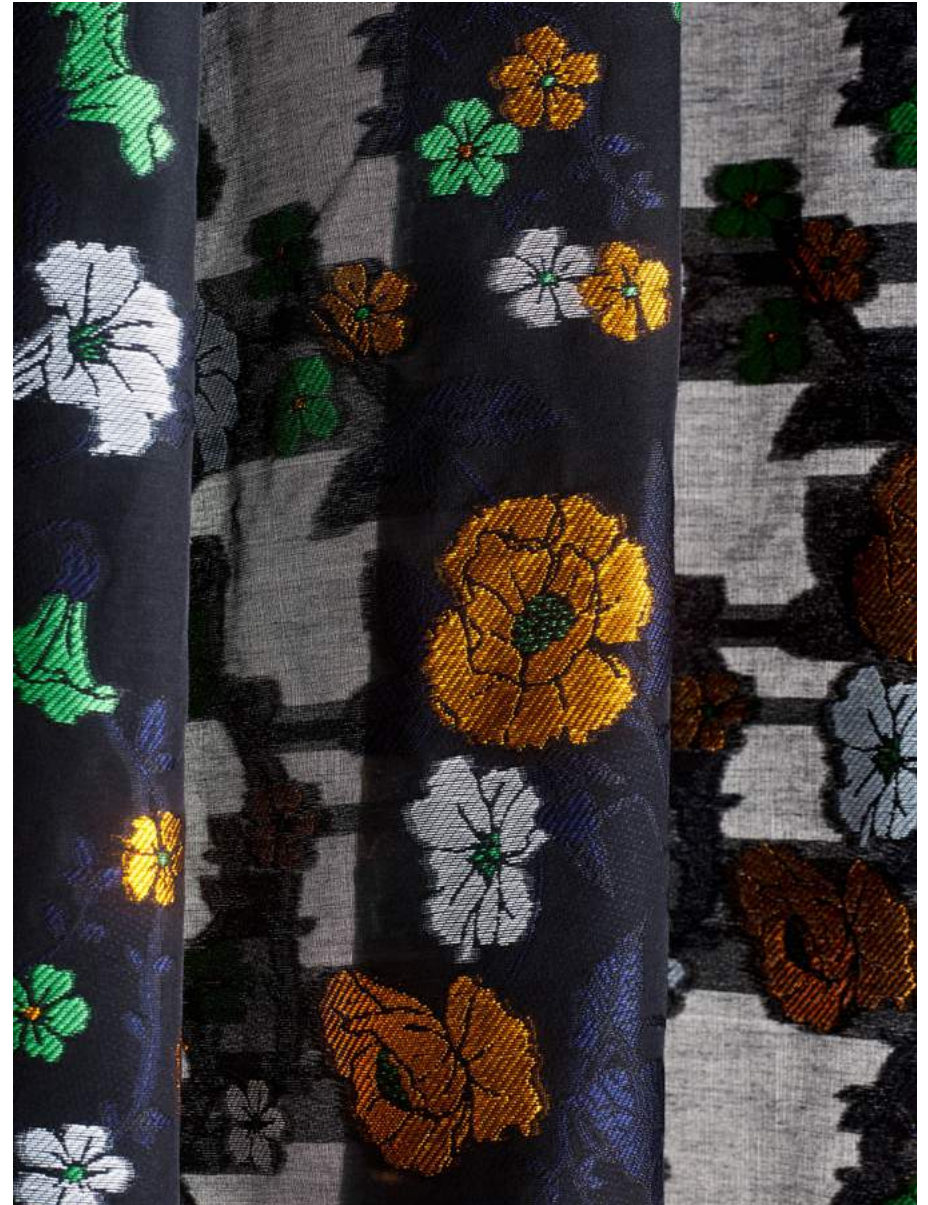
750



970



Inspiration - Monroe



Monroe



Monroe

Drapery

Colours 5

Width 163cm

Material 66% polyester, 34% cotton

A luxurious sheer dissolving a classic flower pattern into a floral field, *Monroe* evokes fragile glamour and haute couture dresses. A detailed yet lightweight textile using the fil coupe shearing technique to create a transparent base in the jacquard weave, it looks as striking hanging in dense folds as it does with light shining through it. Lurex and matt cotton suggest high-low fashion, while colour combinations alter the figurative expression, from cinematic in onyx and electric blue on a royal black base to mod flower power in electric orange mixed with deep blue, acid green and optic white. In buttercup yellow and silver grey it is dreamy and ephemeral, while the pattern is barely discernible in pearl white on white.



100



120



170



180



190



Inspiration - Tropic



Tropic



Tropic

Drapery

Colours 10

Width 137cm

Material 6% cotton, 4% linen, 11% acetate,
58% polyester, 21% viscose

Inspired by colonial era aesthetics and adventurous journeys, *Tropic* is a soft jacquard weave with a textured, almost embroidered appearance from its composition of silky, metallic and matt yarns. Referencing exotic nature and wilderness, its large leafy design takes on diverse character depending on colour and yarn combinations. In golden yellow it glows like a vibrant Tussar silk while royal blue on a silver base evokes delicate Chinoiserie. Textured yarns in rusty orange and midnight with a mélange background are warm and tactile, while in sandy beige with white the pattern appears as the vaguest of outlines.



100



220



240



270



360



450



470



660



740



780

1.20 m curtain sample hangers

Package 1

1.20 m curtain sample hangers with waterfall,
6 designs

Normal price: EUR 290

Package price: EUR 203 (30% discount)

Package 2

1.20 m curtain sample hangers with waterfall,
6 designs + 30 x 60 cm upholstery sample books,
2 designs

Normal price: EUR 496

Package price: EUR 347 (30% discount)

Package 3

1.20 m curtain sample hangers with waterfall,
6 designs + 15 x 22 cm upholstery sample books
or Hardcover books, 2 designs

Normal price: EUR 380

Package price: EUR 266 (30% discount)

1.20 m Schauben

Package 4

1.20 m lengths with waterfall, 6 designs

Normal price: EUR 290

Package price: EUR 203 (30% discount)

Package 5

1.20 m lengths with waterfall, 6 designs
+ 30 x 60 cm upholstery sample books, 2 designs

Normal price: EUR 496

Package price: EUR 347 (30% discount)

Package 6

1.20 m lengths with waterfall, 6 designs
+ 15 x 22 cm upholstery sample books or
Hardcover books, 2 designs

Normal price: EUR 380

Package price: EUR 266 (30% discount)

Long lengths for shops and dealers

Height +/- 300 cm, width +/- 120 cm

Package 7

2 lengths 25% discount

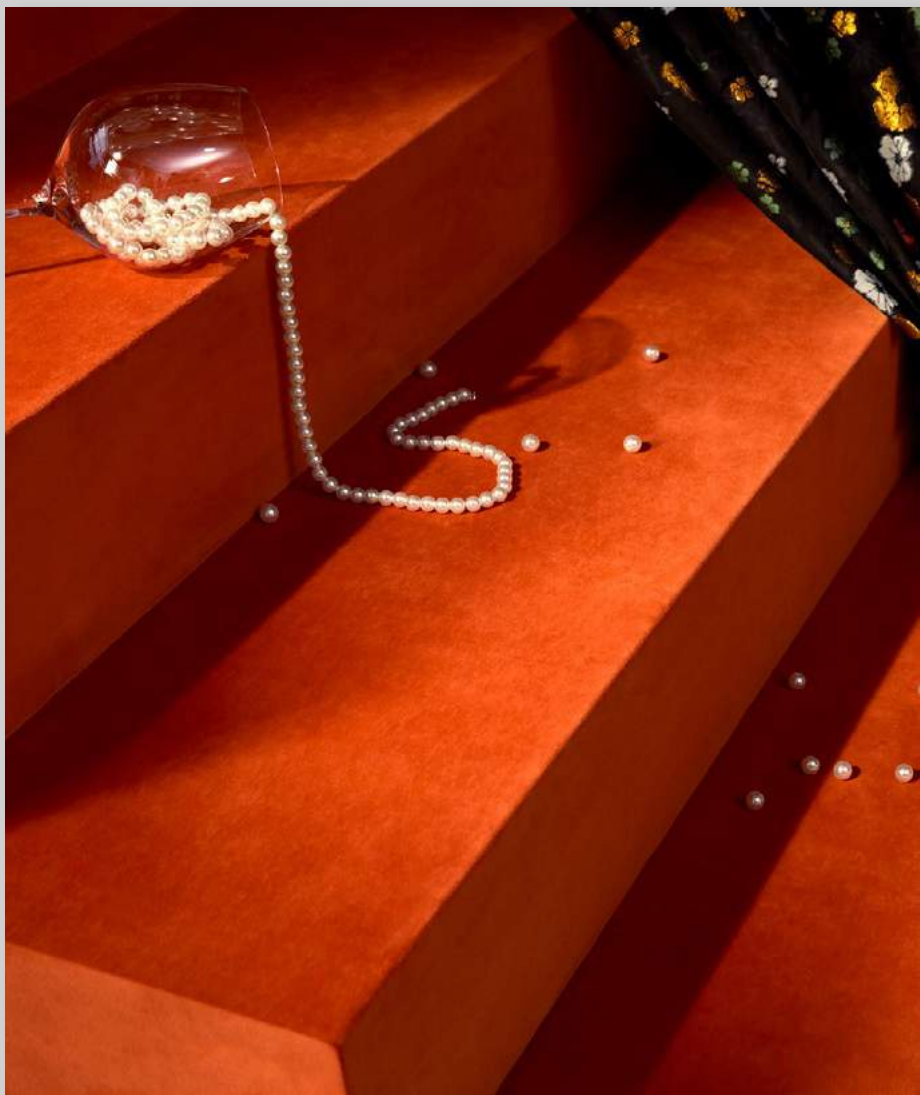
Package 8

3 lengths 30% discount

Package 9

4 lengths 35% discount

No banner included



Above: Armchair Baru 740; Left: Steps Cuba 014, Drapery Monroe 170



Above: Table cloth Pippa 110, Drapery Pippa 550
Right: Drapery Tropic 470, Sofa Tropic 270, Trousers Tropic 470, Floor Cuba 013






Top to bottom: Pippa 210, Clay 015, Baru 450, Saros 750,



Clockwise: Oaxaca 950, Pippa 500, Bro8 023, Proof 018

The background is a dark, out-of-focus photograph. It features several circular bokeh light spots in various colors, including white, yellow, and blue. A prominent vertical rainbow-colored light streak is visible in the lower center. In the top right corner, there is a faint, dark geometric pattern that resembles a maze or a circuit board layout. The overall mood is mysterious and artistic.

Thank you for your attention